

# How to dispose of garbage in Fuji City

ふじし

富士市

わ

かた

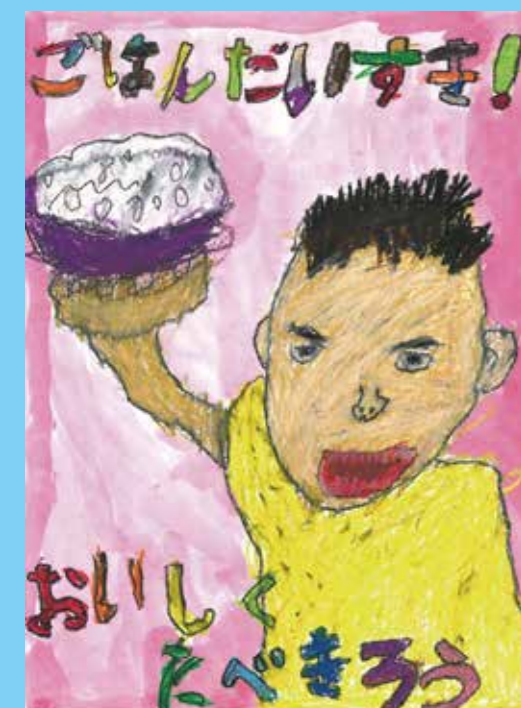
べんりちょう

## ごみの分け方便利帳

2024.3

英語

# NO! food loss



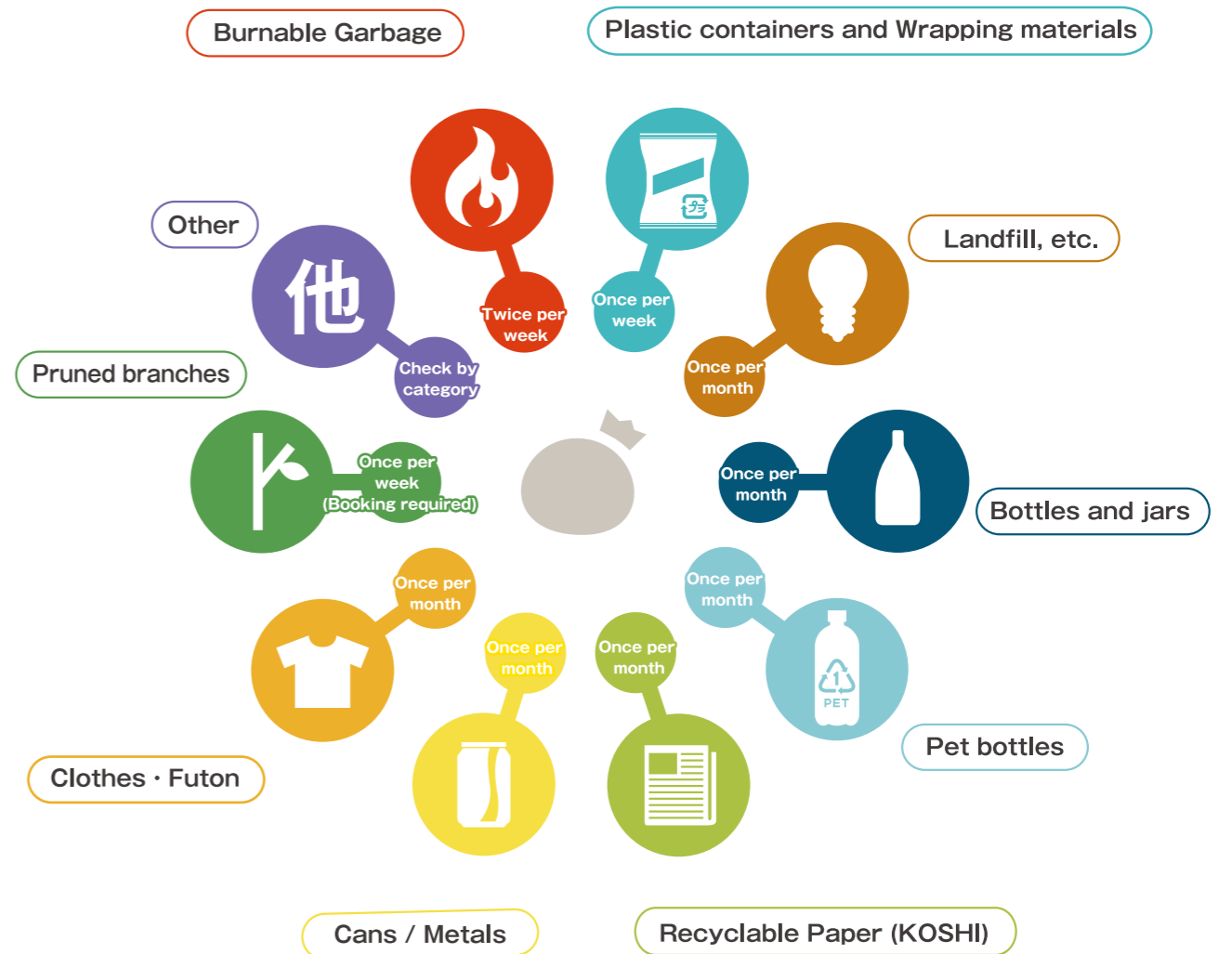
Categories of waste	P1
How to dispose of garbage in Fuji City, Designated waste bag	P2
Please make use of the San-Aru garbage sorting app	P3
Burnable Garbage	P4.5
Plastic containers and Wrapping materials	P6.7
Recyclable Paper (KOSHI)	P8.9
Clothes・Futon	P10.11
Landfill, etc.	P12~16
Cans / Metals	P17
Pet bottles	P18
Bottles and jars	P19
Method of Disposal for Electrical Appliances restricted by Recycling Electrical Appliances Act	P20
Recycling of motorcycles	P21
Recycling of personal computers	P22
Main items that are not collected by the city / Items that cannot be disposed of by the city	P23
Bringing garbage to the Shin-Kankyo Clean Center	P24.25

# MEMO

## Categories of waste



Trash if mixed, resources if separated



**Please check the Waste Collection Calendar for waste collection dates in your area.**

If you do not have a calendar, please contact the Fuji City Hall Waste Measures Division.

You can also check it on the Fuji City official website.



# How to dispose of garbage in Fuji City

Please put out garbage by **8:30** am on day of collection.

Waste is collected on public holidays.

(Waste is not collected on Sundays or during year-end and New Year's holidays.)

If your apartment building, etc. has its own rules, please follow these.  
Please check "Koho Fuji" or the City of Fuji website for the year-end and New Year's holiday schedule.

## Garbage collection during typhoons, heavy rain, and other weather warnings

Generally speaking, all garbage will still be collected during typhoons, heavy rain, and other weather warnings, unless it is physically impossible to do so due to the collapse or flooding of roads along the collection route. (Excludes cases in which an emergency warning has been issued)

When it comes to taking out the garbage, we ask for your cooperation and understanding with regards to the following.

- To prevent hazards, do not take out the garbage the day prior to the collection date.
- Put your own safety first and refrain from taking out the garbage if there is any risk to your safety. You can take out the garbage on the following collection date.

## Designated waste bag

Burnable garbage, cans, plastic containers and wrapping materials, waste paper and waste clothes must be put in the Designated Bags before disposal.

There are 2 types of designated bags,

the **"MOERUGOMI SENYO BUKURO"** and the **"SHIGENBUTSU SENYO BUKURO"**  
(Garbage Bag for Burnable Items) (Garbage Bag for Recyclable Items)

The designated garbage bags come in 3 sizes:  
45 liters (large), 30 liters (middle), 15 liters (small).

When bringing your garbage directly to the Shin-Kankyo Clean Center, please use a designated waste bag.

**"MOERUGOMI SENYO BUKURO"**

(Garbage Bag for Burnable Items)

**"SHIGENBUTSU SENYO BUKURO"**

(Garbage Bag for Recyclable Items)

These items must be put into the "Garbage Bag for Recyclable Items"  
Plastic containers and wrapping materials  
Other papers  
Cans  
Old clothes



Designated waste bags from other cities, towns, or municipalities cannot be used.

Please make use of the San-Aru garbage sorting app **さんあ〜る**

We offer a free garbage sorting app called San-Aru, exclusively for smartphones. The app can help solve any problems you may experience in your garbage disposal duties.



### 対応言語

- 日本語
- 英語
- 中国語（簡体字）
- ポルトガル語
- スペイン語
- ベトナム語
- 韓国語
- インドネシア語



## Available Features

### Garbage calendar

Displays garbage collection dates on a calendar.

### Garbage sorting booklet

View this booklet on the app

### Notification to take out garbage

Sends you notifications on the day before or the day of the garbage collection date.

## How to Download

Download it onto your smartphone or tablet for free, through the following method.

- Scan the QR code to the right.
- Search for "San-Aru" on the App Store or Google Play Store, and download the app.



## Initial Settings (Region Settings)

- (1) Tap "Regional Settings" in "Settings."
- (2) Select "Shizuoka Prefecture" from the list of prefectures, then "Fuji City."
- (3) Select the region you live in and the neighborhood association you are a part of to complete the process.



# Burnable Garbage



## How to dispose

Put the items in the Fuji City's Designated "Garbage Bag for Burnable Items" and bring them to the burnable garbage collection site twice a week.

Do not put your garbage inside other plastic bags (such as plastic bags from the supermarket) and please use only the designated "Garbage Bags for Burnable items".



## Can be put out

### Food waste

Plastic bags found in supermarkets can also be used to collect burnable kitchen wastes. Wherever possible, do not allow garbage to get wet. "80 percent of the Food waste is liquid" Drain out the liquid before disposing! Try one last squeeze before disposal.



### Rubber products



### Plastic products

#### Items that do not have a plastic mark

The plastic products themselves are considered burnable garbage. Items **exceeding 50 cm on one or more sides**, however, should be disposed of **as landfill garbage (oversized garbage)**. (P12)

These items may be disposed of as burnable garbage if they can be reduced to 50 cm or less on all sides. (Single-row clothes storage cases can be disposed of as burnable garbage even if they exceed 50 cm on one or more sides)



### Non-recyclable paper or cloth

Paper or cloth that are stained with oil or paint. Very dirty or old clothes with a strong smell. Tissue paper Paper diapers Iron print paper



### Wood and wooden products

Cut the items so that all sides are 50 cm or less in length, and 10 cm or less in thickness.

If this is difficult for you to do, ask a private business to dispose of the items for a fee. Wooden furniture should be disposed of as is as landfill garbage (oversized garbage).



### Bamboo skewers

Wrap them in paper or other wrapping materials, or break the tips and cover with vinyl tape and put them in the bag.



### Large burnable garbage such as carpets or rugs.

Cut carpets or rugs into 6 - 8 equal parts and put them into designated bags, or fold and tie them with a string before disposal. Electric carpets must be disposed of as landfill garbage



### Cushions, pillows, floor cushions, and stuffed animals

- These are considered burnable garbage. They cannot be disposed of as clothing.
- Small stuffed animals 15 cm or less in size should be disposed of as a small item on the clothing collection date.
- Bean bags cannot be disposed of at a collection point, regardless of their size. Please take bean bags directly to the Sin Kankyo Clean Center. (To prevent them from rupturing and scattering beads)
- Mattresses that are less than 5 cm thick and do not contain springs are considered burnable garbage. Anything else is considered landfill garbage (oversized garbage).

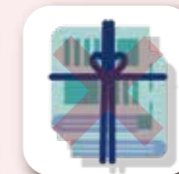


## Cannot be put out



Plastic Containers and Wrapping Materials

P6



Waste Paper

P8



Old clothes and bedding

P10



Disposable lighters

P13



PET bottles

P18

## Note

Any metal included in burnable garbage can cause the incineration equipment to malfunction. Metal can be sold as a resource, even in small amounts. Please remove as much of it as possible, and dispose of it on the metal collection date.

# Plastic Containers and Wrapping Materials



Recycled as plastic products and chemical feed stock.

This category includes Containers and Bags made of plastic which are used for holding products

## How to dispose

- Put the items in the Fuji City's "Designated Garbage Bags for Recyclable Items" and bring them to the recyclable items collection site once a week.
- Items with the sign are subject to recycling. →
- Large items that are too big for the bag, such as Styrofoam, are to be disposed of without a bag.



## Before putting out waste

Empty the insides and rinse or wash them. (Items with stains which cannot be removed should be disposed as burnable garbage)

※ Plastic containers can be disposed only when their stains do not transfer to others in the designated bags .

## Can be put out



## Cannot be put out

- Items with stains which cannot be removed should be disposed as burnable garbage

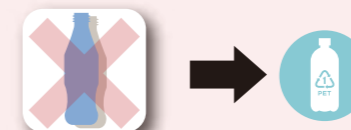


- Plastic products themselves like cassette tapes and toys are not included in this category



- Items exceeding 50 cm on one or more sides are considered landfill garbage (oversized garbage). (Single-row clothes storage cases are considered burnable garbage even if they are large)

- Please crush PET bottles on the day that PET bottles are collected, then put them out. However, labels and caps should be put out with plastic containers and packaging.



## Note

- When stickers do not come off the items, the items can be put in the garbage bags with them.
- Large items that are too big for the bag, such as Styrofoam, are to be disposed of without a bag.

# Recyclable Paper (KOSHI)



## Three organizations which collect Recyclable Papers

### Collection by the local government. (at the local collection sites)

Depending on the amount of collected Recyclable Papers, an incentive fee is paid to the local community. It is recommended to dispose of the Recyclable Papers at your local collection site.

Used paper containing a small amount of metal or plastic will still be collected by the city.

### Collection by the local community.

Neighborhood associations, PTA, etc. (Check the list of the collection of each organization)

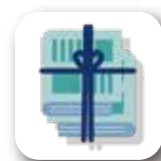
### Waste paper collection box operated by a private company, etc.

Types of items collected will vary between collection boxes. Please remove any metal or plastic before disposing.

## Can be put out

Sort and separate by type, then tie with a paper string before putting out.

### Newspaper



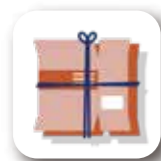
Flyers can be included.

### Magazines



Books, notebooks, paperbacks and encyclopedias are also included. Thin books that are fastened with wire or staples are included.

### Cardboard boxes



Please be sure to fold them.

### Paper Cartons



Rinse inside, cut and open them out before disposal. Cartons with aluminum inside should be disposed of as "Other Papers".

## The Other Papers

They are papers except for Newspaper, Magazines, Cardboard Boxes and Food Containers made of paper.

You can use any of the following methods.

- Wrap the items with wrapping paper and bind them.
- Put the items in a paper bag and tie with a paper string.
- Put in a resource bag.

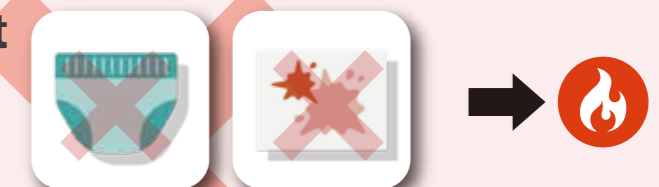
### Examples

Used paper containing a small amount of metal or plastic will still be collected by the city.



⚠ Shredded paper should be placed in a special bag specifically for resources, and the mouth of the bag should be tied tightly to prevent the paper from spilling out.

## Cannot be put out



Tissues Wet wipes Paper diapers Dirty paper Iron print papers Non-woven fabrics (masks, etc.)  
Since the following materials are not used as recyclable paper, dispose of them as burnable garbage.

## Attention

**Do not dispose of paper in the following ways!**  
**(Prohibited ways of disposal)**

- Bind waste paper with duct tape or vinyl strings
- Use cardboard boxes as containers
- Putting various kinds of paper together without sorting them into categories

# Clothes • Futon



## How to dispose (Clothes)

Separate the garbage into similar categories such as, clothes • cloth, shoes, small articles, put them into the “Garbage bag for recyclable items”, and tie up the opening of the bag before disposal.

Clothing can also be placed into clothing collection boxes installed in public facilities such as the Machizukuri Center.



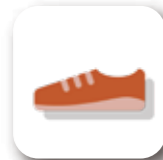
## Can be put out

### Clothes and cloth



Please wash and dry before disposing.  
T-shirts, Suits, Down Jackets, Kimono, Socks, Towels, Mufflers, etc.

### Shoes



Leather shoes, sneakers/trainers, pumps  
Sandals, slippers  
If unsuitable for wear, these are burnable garbage.  
**Shoes without a pair should be disposed as burnable garbage.**

### Belts, hats, bags, and other small articles



Belts, business bags, sports bags, back packs, tote bags, hats, stuffed toys (under 15 cm.), etc.  
If broken, these are burnable garbage.

## Cannot be put out

Mattress (Items containing no metal)  
Seat cushions Cushions Rainboots  
Curtains Carpets Suitcases

\*Mattresses with a thickness of 5 cm or more and mattresses with springs are considered landfill garbage (oversized garbage)

\*Bean bags cannot be disposed of at a collection point, regardless of their size. Please take bean bags directly to the Sin Kankyo Clean Center.



## Futon

## How to dispose (Futon)

Tie Futon • blankets with a string before disposal.

Please dispose of futons, blankets, etc. at the collection point on the day of collection each month.

Futons and blankets must not be placed in collection boxes such as those at the Machizukuri Center.

## Can be put out

**Mattresses, duvets, kotatsu covers, blankets, etc.**



## Attention

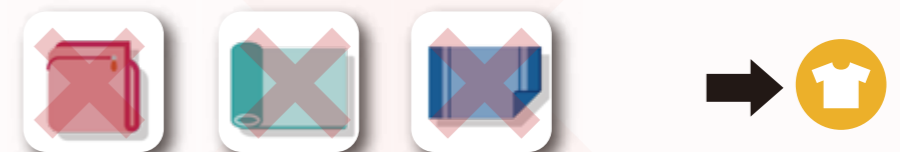
- ◎ Please do not place in a bag.
- ◎ You cannot dispose of them when raining.
- ◎ Please tie up futons and duvets separately, without any other item.
- ◎ When tying up futons, etc., be careful not to place any objects inside.

## Cannot be put out

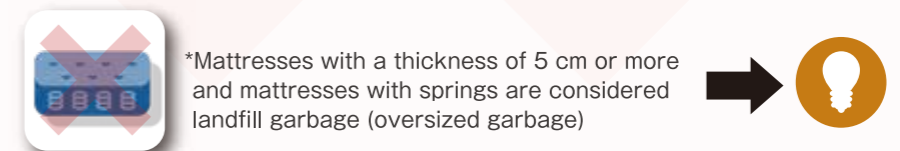
Please dispose of urethane mattresses and pillows as burnable garbage.



Please dispose of duvet covers and sheets together with clothing.



Please dispose of spring-loaded mattresses as landfill.



\*Mattresses with a thickness of 5 cm or more and mattresses with springs are considered landfill garbage (oversized garbage)

# Landfill, etc.

These are collected separately, from (1)-(7), and are processed through crushing and other means.

After processing, they are divided into items that are to be recycled, items that are to be burned, and items that are to be put in the landfill.

## How to dispose

- Using the appropriate method for each type of waste, please put out at the recycling collection point by 8:30 am on the day of collection each month.
- Each item should be placed according to the category.
- Call and ask Shin-Kankyo Clean Center (Incinerator Plant) to 0545-35-0081 for more detailed information.

## Can be put out

### (1) Landfills

Small items should be put in a clear bag so that the contents are visible. Items like broken bottles, knives, light bulbs should be wrapped in paper, put in clear bags and write the item's names on them when disposing. Skis, China, Light bulbs, Suitcases, etc.



### (2) Home electric appliances

Items that require electric power only. Batteries must be removed. For rechargeable items, ensure the charge is set to zero before putting them out. Items, 80% or more of which are made from metals, are to be disposed as metal and cans.



### (3) Large garbage (furniture)

Call Shin-Kankyo Clean Center (Incinerator Plant) before bringing the items when Carried-in.



TVs, Refrigerators, Freezers, Washing machines, Clothes driers, Air conditioners and Motorcycles are not collected by the City. Details concerning the items subject to KADEN RECYCLE, see page 20. See page 21 about motor bikes.

Plastic products, etc., that exceed 50 cm on one or more sides



### (4) Spray cans

**This waste can be harmful.**  
When disposing, do not mix with other items.

Empty the contents, and place inside a colorless transparent bag without making any holes.



### (5) Fluorescent light bulbs

**This waste can be harmful.**  
When disposing, do not mix with other items.

Bulbs which are not broken should be wrapped with paper or put them in their original boxes when disposing.



### (6) Disposable lighters

**This waste can be harmful.**  
When disposing, do not mix with other items.

Empty the contents, and place inside a colorless transparent bag.



### (7) Batteries Coin batteries

**This waste can be harmful.**  
When disposing, do not mix with other items.

Put the batteries into the red can placed at the collection site.

Alkaline batteries

Manganese batteries

Non-rechargeable lithium batteries

Coin non-rechargeable lithium batteries (model numbers starting with CR or BR). Button batteries and small rechargeable batteries cannot be put out as waste. Please refer to page 14.



## Cannot be put out

### Spray cans with remaining contents

If contents are remaining, these cannot be processed by the city. Please process as outlined below.

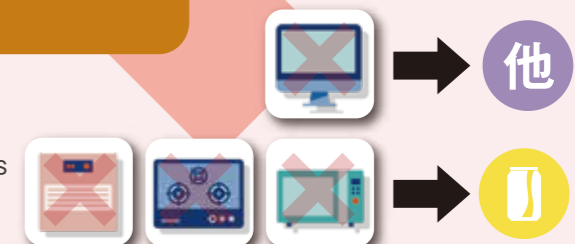
Portable stove gas cylinders	Call and ask Shin-Kankyo Clean Center (Incinerator Plant) to 0545-35-0081 for more detailed information.
Paints, hair dyes, pesticides	Please spray the contents onto waste newspaper (outdoors) before disposing. Please dispose of the contents as burnable garbage.

### Car batteries

Please consult your dealer.

### Items not collected as small household appliances

- Personal computer  
See page 22 for PCs
- Items whose 80% or more are made from metals  
Cans & metallic items  
Microwave ovens, etc.



## TVs, Refrigerators, Freezers, Washing machines, Clothes driers, Air conditioners

TVs, Refrigerators, Freezers, Washing machines, Clothes driers, Air conditioners and Motorcycles are not collected by the City. Details concerning the items subject to KADEN RECYCLE, see page 20. See page 21 about motor bikes.



### Products that include mercury

Mercury thermometers, mercury blood pressure monitors

To prevent accidents, do not dispose of these items at a collection point or in a collection box.

### Swollen or damaged rechargeable batteries

Please take these items directly to the Sin Kankyo Clean Center or the Waste Management Section on the 10th floor of Fuji City Hall.

### Wooden products with a thickness of 10 cm or more

Mortars, carved wooden figurines, Go boards, etc.

The city cannot collect these items.

Please ask a private business to process these.

#### **Paid Service**

Provider:  
Recycling Center, Taiko Paper Mfg., Ltd.

Address:  
244-3 Tadehara, Fuji City ☎ 0545-66-1080



## Garbage associated with work conducted by a contractor

The city will not collect any garbage resulting from work conducted by a contractor.

**Please ask the contractor to dispose of any old components and garbage generated during the work process.**

### Examples of garbage generated by contractor work

Tatami mats, bathtubs, toilet bowls, sinks, range hoods, screens (including nets), sashes, windowpanes, built-in stoves, built-in dishwashers, water heaters, doors and other fixtures, wallpaper, flooring, solar panels, carports, and all other garbage resulting from renovations

### If you have done your own DIY work

The city can collect some of the waste generated.

For the city to collect these, however, you will need to present proof that you purchased or exchanged the item yourself. (Receipts for products/materials purchased, etc.)

For this reason, garbage generated through DIY work cannot be disposed of at garbage collection points.

Please consult the Sin Kankyo Clean Center in advance before taking the items directly there. (☎ 0545-35-0081)

## Batteries not collected by the city

The following types of batteries are not collected by the city. Please bring these to the appropriate recycling partner store. For recycling partner stores, check the Battery Association of Japan website for button batteries and the JBRC website for small rechargeable batteries. When bringing these in, please speak to shop staff.

### Button batteries

Affix adhesive tape over the battery's electrodes to insulate them, and take the battery to a partner store.

Silver oxide batteries (SR) Zinc-air batteries (PR) Alkaline button batteries (LR)  
The first letter of the model number is indicated in parentheses ( ).  
Please dispose of coin-type lithium-ion batteries (CR, BR) at city collection points. (page 13)

### Small rechargeable batteries

Affix adhesive tape over the terminals to insulate them, and take to a recycling partner store.

Nickel cadmium batteries Nickel metal hydride batteries  
Lithium ion batteries Mobile batteries



## Collection boxes are in place specifically for small home appliances

We have set up special collection boxes specifically so that we can safely recycle certain small home appliances—for instance, those with built-in rechargeable batteries, which can cause fires, or those that contain personal information.

The following items should be placed in these collection boxes instead of the usual collection points.

**Items to be collected** Appliances that run on dry cell batteries or rechargeable batteries, recording media (SD cards, etc.), circuit boards, electronic cigarettes

- ⦿ Please ensure the item's battery is completely drained, and remove any batteries that can be removed.
- ⦿ Do not force the item open if the structure of it prevents you from removing the battery, and instead place the item into the box as is.

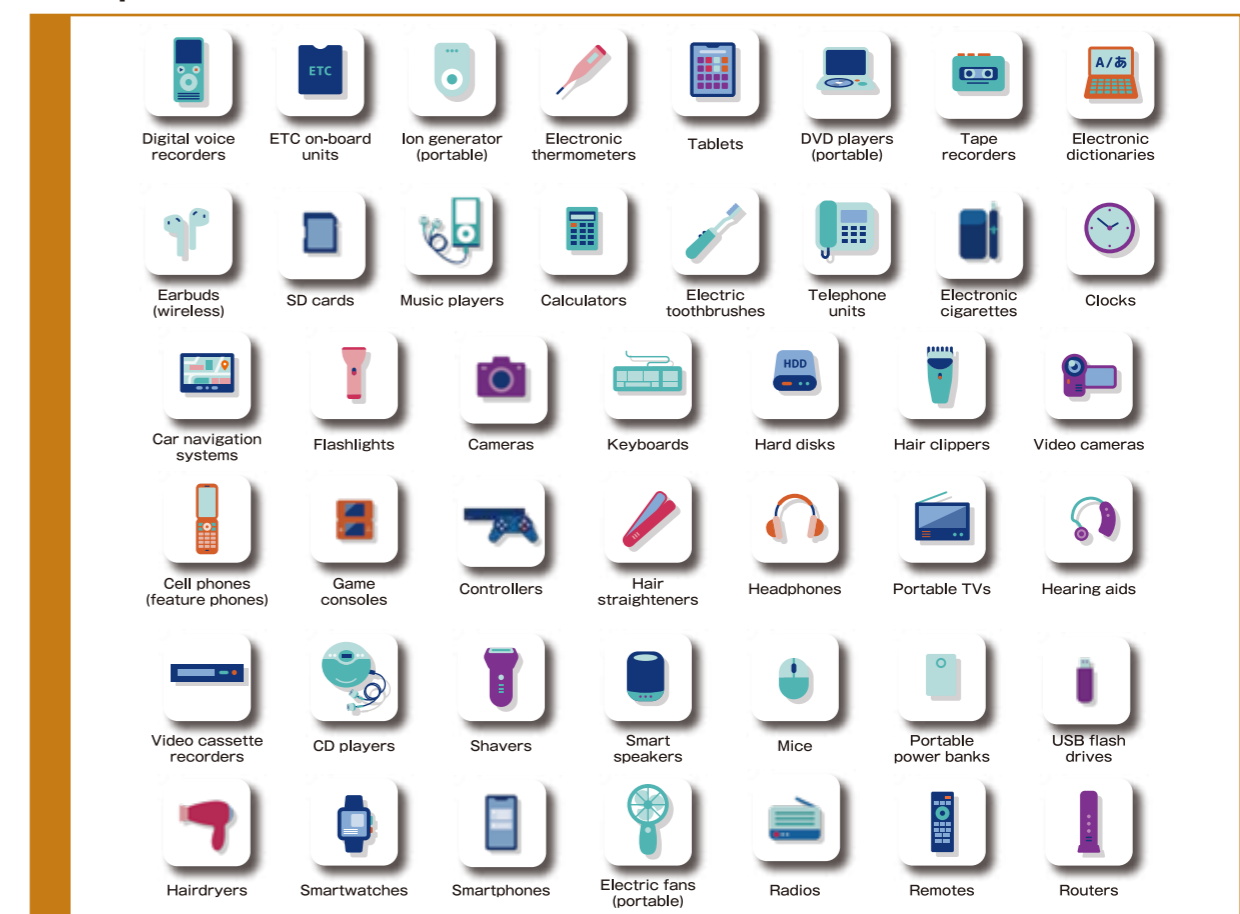
**Items that will not be collected** Items that do not fit in the slot, items other than home appliances, batteries on their own

Height of less than 15 cm  
Width of less than 30 cm  
Depth of less than 30 cm

Size limit

Nothing that is not a home appliance  
Remove batteries  
Take computers and monitors to the Sin Kankyo Clean Center

## Examples of items to be collected in the box



### Location of boxes

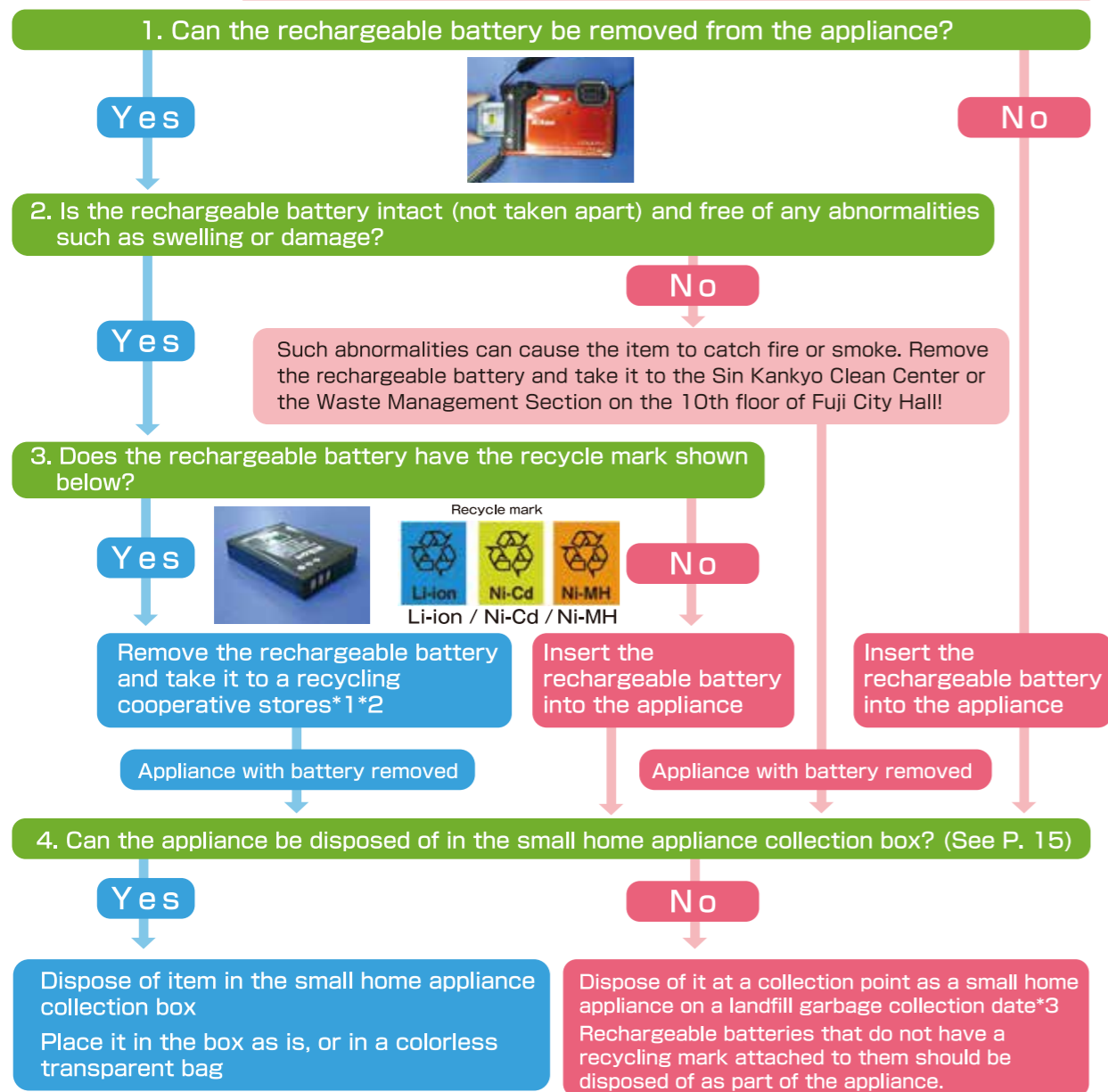
- ⦿ Community Development Center (Machizukuri Center)
- ⦿ Fujikawa Fureai Hall
- ⦿ Second floor of Fuji City Hall (near the West Elevator)
- ⦿ Fujisan Eco-Topia (entrance)

Do not place outside of the box



# How to dispose of home appliances with rechargeable batteries

⚠ Be sure to completely drain the battery before you dispose of the item.  
(Batteries that are not drained can cause a fire)



- ※1 Insulate the rechargeable battery by placing insulating vinyl tape over any electrodes and terminals.
- ※2 Please place them in the "Recycle Box" shown to the right, which are located at JBRC recycling cooperative stores in the city. Please speak to a member of store staff when you bring these items in.
- ※3 Some home appliances are disposed of as metal on can/metal collection dates (See P. 17)



See "How to Dispose of Small Home Appliances" on the Fuji City website for details.

## Note

**Please help us collect rechargeable batteries in a safe manner!**

Products with small, built-in rechargeable batteries, such as lithium-ion batteries, can ignite or generate heat upon impact.

In fact, there have been fires that have occurred in garbage trucks and recycling machines in Fuji City for this very reason.

**Do NOT mix rechargeable batteries in with other garbage, or dispose of them improperly.**



# Cans / Metals



Call and ask Shin-Kankyo Clean Center (Incinerator Plant) to 0545-35-0081 for more detailed information.

## How to dispose

Rinse inside of the cans and put them in the "Designated Garbage Bag for Recyclable items" before disposal. Dispose of metals without putting them in the bag. Dispose of metals without putting them in the bag.

## Types of cans

Do not crush the cans. They could disturb the recycling process.

**Drink cans**  
(aluminum · steel)



**Food cans**



**Cans smaller than 4 liters**



Please empty spray cans, without making any hole, and dispose of them as landfill (page 13).

## Types of metal

**Items whose 80% or more are made from metals**

Remove kerosene and batteries.



**Cans over 4 liters**

Empty the insides and dispose of them. For the leftover paint, soak it up with a cloth or let it solidify before disposing as burnable garbage.



**Needles and nails**

Put them in a container like a Tea can, write the items' name on the surface and dispose of it without putting it in the "Garbage Bags for Recyclable items"

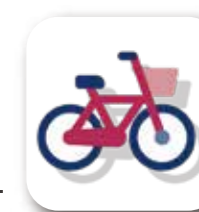


**Bicycles**

Before disposing of a bicycle, please cancel its anti-crime registration at the store where you bought it.

For a power-assisted bicycle, please remove any batteries and bring it into one of the following recycling partner stores.

Watai Auto Shop 1-6-23 Nishikicho, Fuji City  
Cycle Base Asahi Fuji Store 375 Aobacho, Fuji City



# Pet bottles



## How to dispose

- Please place into the collection net at the collection point on the morning of the day of collection each month.
- Please do not put too many bottles in the net and leave enough space (about 20% empty space) so that the net close properly.
- Pet bottles with the “PET 1 mark” are collected. (For drinks, soy sauce, MIRIN, etc.)



## Before putting out waste



① Remove the caps and labels



② Rinse and dry.



③ Step on them to crush.

## Attention

- Waste items with contents remaining cannot be collected.
- The labels and caps should be disposed of as “plastic containers and wrapping materials”
- Colored plastic bottles should be disposed of as burnable garbage.
- Please make sure to put only pet bottles in the net. Do not include plastic bags.

## Bad examples of disposing plastic bottles (Prohibited method of disposal)

- With content still leftover
- With garbage inside
- Disposed of in a bag
- With caps and labels still attached

# Bottles and jars



## How to dispose

- Please place into the collection container at the collection point on the morning of the day of collection each month.
- The crates are stacked and collected, so leave about 20 % of the top space empty.
- Do not place into container while still inside a plastic bag, etc.
- Please take any plastic bags you used for carrying the items back home with you.



## Before putting out waste

### 1. Remove the caps



Metal lids  
→Categorized as Cans · Metals  
Plastic lids  
→Categorized as the Plastic Containers and Wrapping materials.

### 2.Rinse inside



## Can be put out

Cooking oil bottles  
Vinegar bottles  
Jars of Jam  
Bottles for cosmetics  
Salad dressing bottles  
Bottles for coffee, etc  
Beer bottles



## Cannot be put out

The items below cannot be collected on the Bottle collection days!



Please dispose of them as Landfill Garbage (see p.12 p.13)

Opaque-white colored bottles, glass products, glass plates, fluorescent light bulbs, china ware, broken bottles, cups  
Bottles with contents are not collected.

# 他

## Method of Disposal for Electrical Appliances restricted by Recycling Electrical Appliances Act.

Following 6 electrical appliances are subjected to be collected for recycling according to the Recycling Electrical Appliances Act. Televisions, Refrigerators, Freezers, Washing Machines, Clothes Dryers, and Air Conditioners. They are not collected by the Fuji-shi local government even if they are disposed of at regular garbage collection sites. It is illegal to dismantle the appliances by yourself and dispose of them at the collection sites. Please pay the required recycling fee and dispose of the items in the following methods. Table wares and futon dryers should be disposed as Landfill garbage.



## Disposal method

If you have the contact information of the store where you purchased the home appliance you are replacing or disposing of

Ask the store that sold you the home appliance to pick up the item.  
Pay the store the collection/transportation fee and recycling fee.

- The store that sold the product is obligated to pick it up at a location chosen by the individual disposing of it.
- The same is true for purchases made online.

If you **do not** have the contact information of the store where you purchased the home appliance you are disposing of

First, consult with home appliance retailers to see if they can pick up the item. If they are unable to do so, pay the recycling fee in advance at **the post office**, and bring the item to the designated pick-up location.

Consult the Fuji City General Waste Cooperative if it is difficult for you to transport the item on your own, and they will introduce you to a collection/transportation service provider licensed by the city. (☎ 0545-72-5353)

### To be collected by Waste Collectors / Transporter Companies

Consult with the collection and transportation provider, pay the disposal fee (recycling fee + transportation fee), and have them come to your house and pick it up. Depending on the vendor, you may need to pay the recycling fee at a post office in advance.

【 Contacts 】 Fuji City Cooperative Association for General Wastes Tel. 72-5353

### To take them by yourself to the designated collection site

Designated pick-up location: Take to Shinohara Sangyo Co., Ltd., pay the recycling fee, and have them take it. All the domestic manufacturing companies (Kaden Maker) designate the contractors to recycle their products. The contractors are called the Designated Collection Site (Sitei Hikitori Basho). Old Electrical Appliances restricted by Recycling Electrical Appliances Act should be taken to the nearest Designated Collection Site (Sitei Hikitori Basho) by yourself.

【 The Designated Collection Sites (Sitei Hikitori Basho) 】  
Shinohara Sangyo Co. Ltd. (in the Ukishima Kogyo Danchi)  
Address: 2608-43 Nakasato, Fuji-shi  
Phone Number : 0545-32-2160  
Please see the website of Shinohara Sangyo Co., Ltd. for operating days.

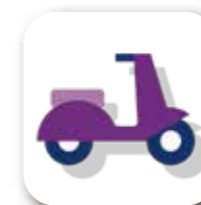


## Recycling of motorcycles

Retailers and manufacturing companies are responsible for recycling the motorcycles. The recycling fees are not charged when the recycling system for motorcycles is used. The Fuji-shi local government does not collect motorcycles for recycling.

### Recyclable items

Motorcycles Mopeds (scooters)



For more detailed information  
Ask at Nirinsha Recycle Call Center  
Phone number : 050-3000-0727  
Business hours : 9 : 30 ~ 17 : 00 (Closed on Saturdays, Sundays, National holidays and New year holiday)  
Web page <http://www.jarc.or.jp/motorcycle/>  
As this excludes some manufacturers, please confirm in advance.



## Disposal method

Motorcycles can be brought to the designated collection sites.

The designated collection site in Fuji-shi is Shinohara Sangyo Co. Ltd.  
(See page 20)

Motorcycles can be brought into the agencies who accept scrapping and recycling motorcycles.

The cost for transport and collection is charged. Ask the agencies for more detailed information.

### 1. Consultation, confirmation

Contact the agencies with the sticker below, or the Call Center to make sure your motorcycle is subject to the Motorcycle Recycling System

### 2. Prepare the necessary documents for bringing in

Motorcycles which are still registered at any District Transport Bureaus or local government cannot be recycled.  
Go through the procedure for discarding vehicles first, then bring the motorcycles to the designated collection sites.

### Documents showing that it has been scrapped

Inquiries	
Gentsuki (Mopeds smaller than 124cc) → Haisha Shinkoku Uketsukesho (Certificate of receipt for disposal of motorcycle)	Fuji City Hall Municipal Tax Department (3rd floor of City Hall) ☎0545-55-2735
Kei Nirin (Motorcycles 125~250cc) → Keijidosha Todokedezumi Hennouzumi Kakuninsho (Certificate of Discarded Small Vehicle Registration)	Shizuoka Transport Bureau, Numazu Automobile Inspection and Registration Office (Numazu City) ☎050-5540-2051
Kogata Nirin (Motorcycles smaller than 250cc) → Jidosha Kensasho Henno Shomeisho (Certificate of Inspection of Discarded Vehicle)	

### Documents to verify your identity

Driver's license, National Health Insurance card, Passport, etc.



## Recycling of personal computers

Personal computers no longer in use at householders are processed along with following methods. They are appropriately recycled at manufacturers.



### Disposal method

Bring them in directly to the Shin-Kankyo Clean Center.

Free of charge

Displays are also accepted. See page 24 about the Shin-Kankyo Clean Center and its business hours. "PC recycle mark" is not necessary. Personal data should be deleted before dispose. When bringing in waste, you may be asked to present documents (driver's license, etc.) that prove that you are a City of Fuji resident.

PCs are not collected at local garbage collection site.

Apply to the manufacture and send by Yu-pack.

You can also ask the PC manufacture to dispose PCs. See following methods.

1. Call the manufacturer's office and ask for recycling of PCs.
2. A form of Yu-pack (parcel-delivery service by post office) is sent by the manufacture company. Simply pack the PC with plastic bags and attach the form.
3. Bring it to a post office or ask the post office for collection.



With the "PC recycle mark", recycle fees are not applied (the post fee is included)  
For the recycling of personal computers, please check the website of the PC 3R Promotion Center.

Make a request with ReNet Japan to have them pick the item up at your home



Request a pickup at ReNet Japan, a government-approved company that offers free computer collection. You can make a request as follows.

- 1 Request the service through the ReNet Japan website.  
(<https://www.renet.jp/>)
- 2 Pack the computer to be disposed of in a cardboard box.
- 3 A courier will come to your home to collect the item.
- 4 ReNet Japan will send you an email notifying you that disposal is complete.



## Main items that are not collected by the city / Items that cannot be disposed of by the city

The following items cannot be collected or accepted, as the city cannot dispose of them. Please consult the relevant point of contact to dispose of these items.

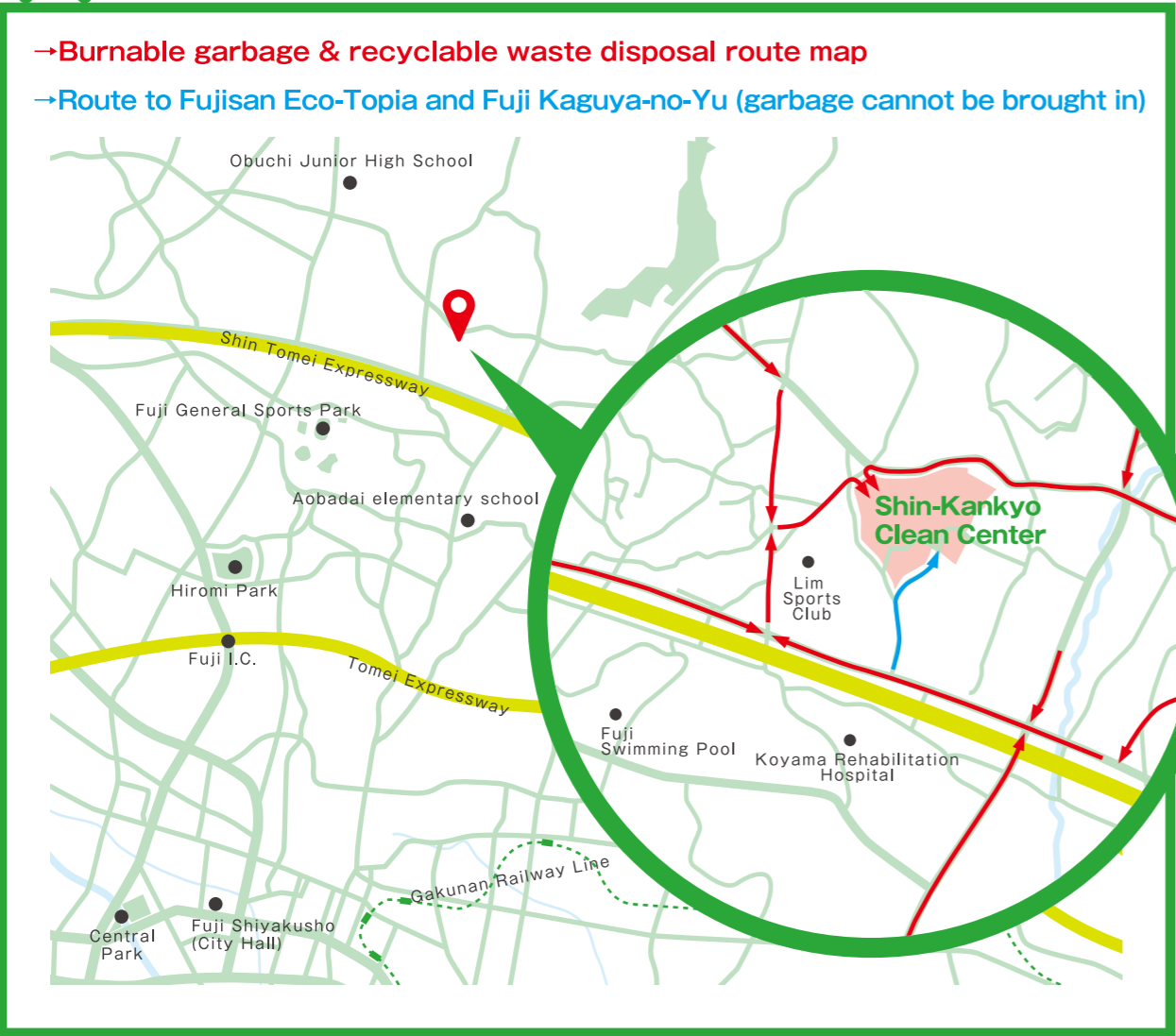
品名	処理方法		
Human waste (Human urine/excrement, vomit, etc.)	Consult the Sin Kankyo Clean Center. Do not dispose of it as burnable garbage.		
Stones / Soil / Sand  Commercial pet litter is considered burnable garbage.	Mochizuki Jari Kogyo Co., Ltd. 4-3-24 Yokowari Maruei Y.K. 454-3 Masukawa Gakuyo Sangyo Y.K. 156-2 Kawanarijima Shizuoka General Processing Center, Co., Ltd. 475-5 Matsuoka	☎0545-61-4558 ☎0545-39-1515 ☎0545-61-1403 ☎0545-64-5155	
Fireproof safes	Fuji Environmental Conservation Corporation 4659-3 Obuchi Eco-Loop Co., Ltd. 831-2 Kitamatsuno Kumao Sangyo Y.K. 891 Gokanjima	☎0545-35-2345 ☎0545-85-3731 ☎0545-64-4162	
Construction garbage (sashes, fences, exterior walls, sliding doors, shoji screens, doors, windowpanes, etc.)	Fuji Environmental Conservation Corporation 4659-3 Obuchi Eco-Loop Co., Ltd. 831-2 Kitamatsuno Kumao Sangyo Y.K. 891 Gokanjima Ichiei Sangyo Co., Ltd. 3752-3 Denbo	☎0545-35-2345 ☎0545-85-3731 ☎0545-64-4162 ☎0545-52-5516	
Wooden products with a thickness of 10 cm or more (mortars, chessboards, Go boards, carved wooden figurines, etc.)	Recycling Center, Taiko Paper Mfg., Ltd. 244-3 Tadehara ☎0545-66-1080		
Auto and motorcycle parts / Batteries / Tires / Mobility scooters	Eco-Loop Co., Ltd. 831-2 Kitamatsuno	☎0545-85-3731	
Pianos	Kumao Sangyo Y.K. 891 Gokanjima	☎0545-64-4162	
Pachinko/slot machines			
Fire extinguishers 	Please consult the recycling system handling counter Contact the Fire Extinguisher Recycling Promotion Center (☎ 03-5829-6773) or search for places that will pick up your fire extinguisher on the Fire Extinguisher Recycling Promotion Center website.		
Chemicals / Pesticides / Herbicides / Large gas cylinders / Gasoline	Contact the manufacturer or distributor of the product. The city cannot dispose of these items. Be sure to check with the seller about how to dispose of the product before you make the purchase.		

# Bringing garbage to the Shin-Kankyo Clean Center

The Shin-Kankyo Clean Center accepts household waste collected in the City of Fuji (excluding used paper) free of charge. If you have a large amount of waste, please bring it in at least 30 minutes before collection time finishes.



## Location & waste disposal route map



# How to bring in waste from your home



1. Notify of the contents of waste brought into the Shin-Kankyo Clean Center.☎0545-35-0081  
 A booking is required on Saturdays and during year-end and New Year's holidays. Please make a booking via the City of Fuji website or the dedicated booking phone line.☎0545-30-6636
2. Sort waste in the same way as when dropping off at a collection point.  
 Put burnable garbage into a special bag for burnable garbage.  
 Put cans, plastic containers and packaging, and clothing into a special bag for recyclables.
3. Receive an IC card at the entrance calibration station and weigh in.
4. Drop off burnable garbage and recyclables at the designated place in the resource collection building. Drop off pruned branches at the platform (1st floor).  
 As a general rule, you should unload and transport waste to the designated place by yourself. If you have heavy garbage or a large amount of garbage, please bring along someone else in your vehicle to help.
5. Weigh in at the exit calibration station, and return the IC card.

## Attention

- ◎ You are not permitted to bring in other people's garbage or waste from outside the City of Fuji.
- ◎ As a general rule, the person who puts out the garbage should come to bring the garbage in.
- ◎ You may be asked to present documents that confirm that you are a City of Fuji resident. (driver's license, utility bill payment statements, etc.)
- ◎ Vehicles used to bring in waste must be no more than 2 tons in weight and no more than 4.7 meters in overall length.

## Cremation of dead animal remains

The remains of pets such as domestic dogs and cats are cremated in the incinerator for small animal remains in the Shin-Kankyo Clean Center.  
 Please notify the Shin-Kankyo Clean Center before bringing these in.  
 Incinerated remains and ashes will not be returned.  
 The price is 2,090 yen (including tax) per body. (as of March, 2024)

## Items not eligible for disposal or collection in the city

Stone, soil, sand	Either handle these yourself, or consult with a landscape contractor.
Fire extinguishers	Either contact your dealer or the Fire Extinguisher Recycle Promotion Center Corporation.
TVs, refrigerators, freezers, washing machines, clothes dryers, air conditioners	Please refer to page 20.
Motorcycles, Motor bicycles.	Please refer to page 21.

## Illegal dumping prohibited

The City of Fuji is committed to early detection and prevention of illegal dumping with our illegal dumping monitoring patrol team and staff. When we discover illegal dumping, we investigate in cooperation with the police. Anyone dumping waste illegally will be punished by a fine of up to 10 million yen or imprisonment for up to 5 years.

**If you discover illegal dumping, please report it.**